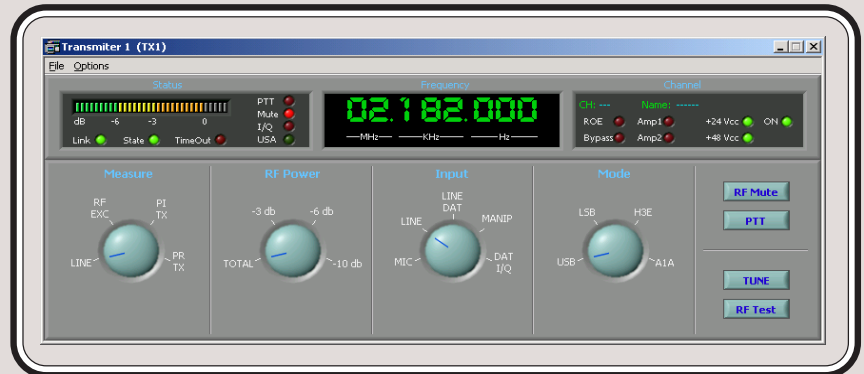




INVELCO S.A.
INVESTIGACIONES ELECTRONICAS Y COMUNICACIONES

CONTROL OF 1 TRANSMITTER IN
LOCAL/REMOTE MODE.

RS-232-C CONTROL BUS



MANAGING AND CONTROL OF ONE TRANSMITTER UNIT MODEL TL-500-T

The managing and control of several Transmitter is done through a software program executed in a PC. This program offers the possibility, through its configuration, to govern one transmitter unit in local/remote mode. It shows different screens with the states and controls necessary for the complete governing of them.

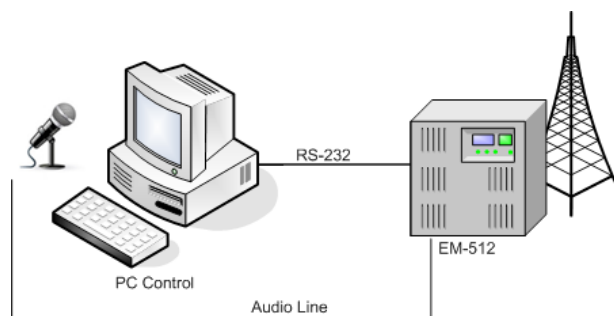
IMPORTANT SPECIFICATIONS :

- Configure EM-525-D / EM-525-X Transmitter.
- Memorizes up to 255 channels.
- State, Frequency. Channel and Communications indicators.
- Events register.
- Complete control of all the Transmitter functions.

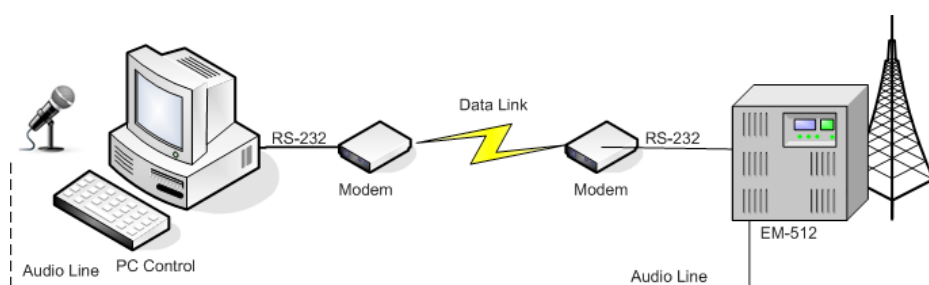
MANAGING AND CONTROL OF ONE TRANSMITTER UNIT.

MODEL TL-500-T

DIFFERENT CONFIGURATION MODES:



LOCAL MODE



REMOTE MODE

Note: For any other configuration, confer the manufacturer.

SOFTWARE CHARACTERISTICS:

- State, Frequency, Operating channel and Communications Indicators.
- Measurements control: Line, Rf Exciter, Tx Incident Power, Reflected Power Exciter.
- Input control: Microphone, Line, Data, Keyer, I/Q Data.
- Mode control: USB, LSB, H3E, J2A, A1A, F1B.
- Mute Rf control, PTT, Tune, Rf test.
- Memorizes up to 255 channels.
- Events register.
- Auxiliary functions: Quit, Power supply, Linear Amplifier Bypass, Amplifier Reset.

REQUIREMENTS.

- PC Pentium IV or superior, CD-ROM reader, Keyboard and mouse.
- One Serial Port RS-232-C.
- >256Mb. RAM (recommendable).
- Operating System: Windows 2000 (SP4), XP. (SP2).
- NET Framework 2.0
- Screen definition: 1024 x 768 (recommendable)