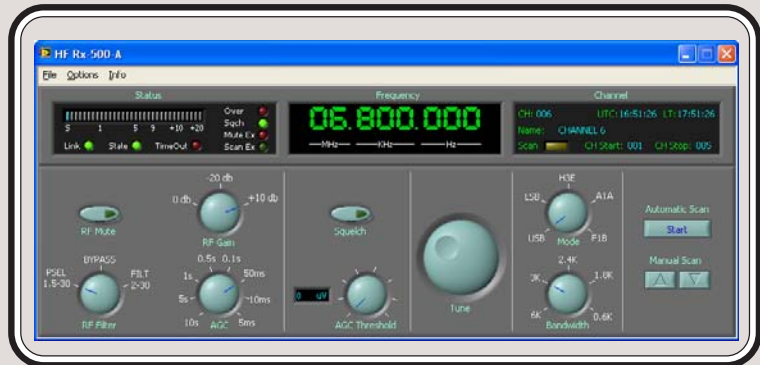




CONTROL OF 1 RECEIVER IN  
LOCAL/REMOTE MODE.

RS-232-C CONTROL BUS



## MANAGING AND CONTROL OF ONE RECEIVER UNIT MODEL TL-500-R

The managing and control of one Receiver Unit is done through a software program executed in a PC. This program offers the possibility, through its configuration, to govern the one Receiver Unit. It shows different screens with the states and controls necessities for the complete governing of unit.

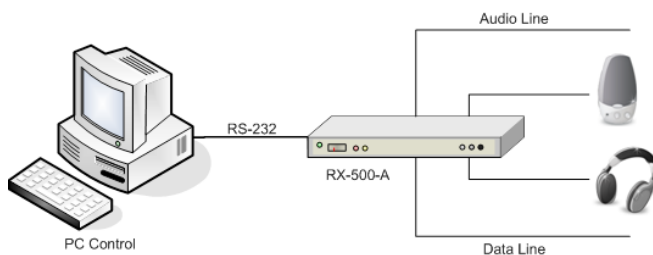
### IMPORTANT SPECIFICATIONS :

- Total Configurated and Memorized of one RX-200-A, RX-300-A, RX-500-A Receiver Unit.
- Memorizes up to 255 channels.
- State, Frequency, Channel and Communications Indicators.
- Events register.
- Complete control of the all Receiver functions.

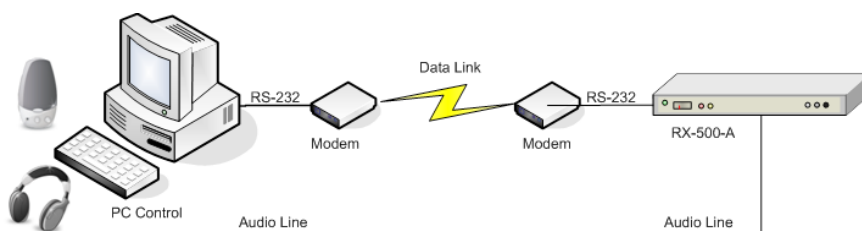
## MANAGING AND CONTROL OF THE RECEIVER UNITS.

### MODEL TL-500-R

#### DIFFERENT CONFIGURATION MODES.



#### LOCAL MODE



#### REMOTE MODE

Note: For any other configuration, confer the manufacturer.

#### SOFTWARE CHARACTERISTICS:

##### FOR RECEIVER EQUIPMENT.

- State, Frequency, Working channel and Communications Indicators.
- Rf Mute control, Rf Gain, Rf A.G.C. Filter, Squelch, A.G.C. and Squelch level in  $\mu V$ , Tune, Mode, Audio Filter, Scan and Scan of preferred channels.
- Memorizes up to 255 channels.
- Events register.
- Auxiliary functions.

##### REQUIREMENTS.

- PC Pentium IV or superior, CD-ROM reader, Keyboard and mouse.
- One Serial Port RS-232-C.
- >256Mb. RAM (recommendable).
- Operating System: Windows 2000 (SP4), XP. (SP2).
- NET Framework 2.0
- Screen definition: 1024 x 768 (recommendable)